



# Covenant Christian School

## UNIFORM POLICY

---

Prepared by	
Number of pages	7
Date prepared	
Approved by	Board
Monitored by	Principal
Review by	Deputy Principal / Head of Junior School
Date for review	April 2015
Status	Current

---

### Version History

Version	Date	Notes
1.0	8/11/06	Acceptable Shoes section added.
	April 2009	Reviewed – Jewelry section amended
	Sept 2013	Reviewed and updated

**THIS PAGE LEFT INTENTIONALLY BLANK**

## UNIFORM POLICY

The school uniform is compulsory. Details of the school uniform are available from the school office – **refer to the Acceptable Shoes and Uniform Requirements sheet below for whole school uniform.** Each class teacher or supervising sport teacher is responsible for administering the uniform policy in his/her class. (See also Sports Policy for sports uniforms.) Each teacher, of course, should monitor uniforms throughout the day.

If there is any doubt about whether an item of uniform is acceptable, discuss the matter with the Home Class Teacher, Deputy Principal or Head of Junior School.

### **Secondary Uniforms**

1. Uniform remains primarily the responsibility of Home Class Teachers although all teachers should deal with uniform infringements involving items which can be changed during the day, eg jewellery, sneakers. The critical feature should be CONSISTENCY.

All teachers should make a point of observing the uniform. Students out of uniform without a note should be sent to the Deputy Principal or delegate. They are issued with a slip to show the sending teacher on their return to class. The infringement is noted by the Deputy on Edumate. Frequent offenders without cause will be given a lunch detention; these detentions are not cumulative. If students continue to offend the Deputy will contact parents.

2. Students constantly in incorrect uniform despite these measures will receive a Friday afternoon detention for disobedience. Students without a required uniform item may be provided with one from the Uniform shop and the item put on the school fees.

Random uniform inspections may be held. Students out of uniform at this time will be sent to the Deputy.

3. In the first week of the year and after the change to winter uniform students may be given till the following Monday to correct their uniform without penalty if, in the opinion of the Home Class Teacher, an honest mistake has been made. New students to the school will be given this allowance also.
4. If there is any uncertainty about a uniform standard or if a significant problem is encountered, the Home Class Teacher / Deputy Principal should be advised.

The Home Class Teacher and Year Coordinators should be kept aware by Edumate notices of any regular offenders and specific problems relating to the uniform.

### **Dress Code for School Fun Days**

- No thongs or slip-on shoes (WHS requirements for practical classrooms and the playground)
- No strapless tops or exposed midriffs for all students
- No transparent (see-through) clothing
- Jeans or shorts are acceptable for all students; also dresses for girls which are no shorter than present uniform guidelines
- For Fun Days it is good to consider that students will be participating in activities, so appropriate loose clothing would be best for all students to wear.

### **Sports Uniform**

Only the full and correct uniform for each particular sport shall be acceptable for the student to participate.

Students wearing incorrect uniform will be sent to the Deputy..

Notes for extenuating circumstances will be received by the Sports Coordinator no later than recess. The Sports Coordinator will sign and date notes for validity. Students will then hand these to supervising teachers.

Swimming costumes shall be one piece and no cut-outs or too brief (ie modesty is the aim).

## Acceptable Shoes at Covenant Christian School

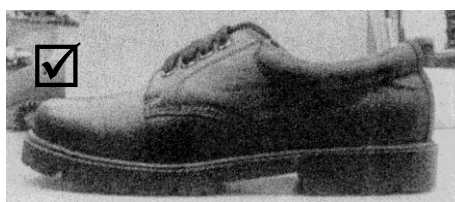
### Uniform Policy

#### School Shoes

- Plain black polishable shoes to be worn.
- Shoes must cover full instep and be below ankle, that is must not be a boot.
- No soft uppers or punched holes completely through the shoe for safety reasons.
- Plain black laces.
- Heels not to be more than 25-35mm high.
- Must cover the upper surface of the foot.

#### Why??

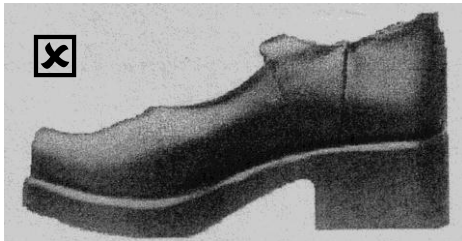
To meet Workplace Health and Safety requirements, school shoes must provide physical protection to the foot in case of liquid spills or falling objects. Heels that are too high and platforms that are too thick, or too inflexible, introduce danger as they present the possibility of ankle injury. In addition, school shoes must not represent a danger to other students. Consequently, school shoes must be chosen which comply with the uniform policy and standards outlined below. The bridge of the foot must be enclosed and the heels must be of limited height. Hence, school shoes must be lace ups with a maximum heel height of 3cm and platform of 0.5 cm giving the combined height of NO more than (platform & heel) 3.5cm. The shoes pictured on his page represent a sample of shoes which are acceptable.



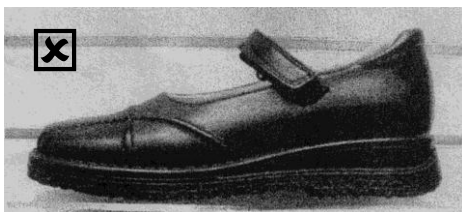
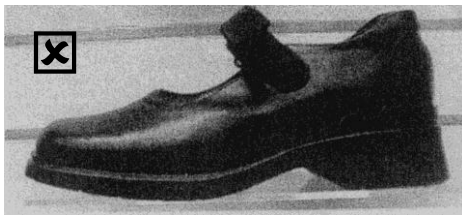
## Unacceptable Shoes

The shoes pictured on this page are unacceptable. They are fashion shoes which afford the foot and ankle inadequate protection against spills and injury.

The first two shoes do not offer protection for the top of the foot and the heel is too high. (That is greater than 35mm) The one on the right also has a buckle, which might cause injury to others.



The other remaining unacceptable shoes are examples of those shoes which do not provide adequate protection for the foot. The boys black jogger style shoe is a soft leather upper and the punched holes do not provide adequate protection from spills.



Please assist us in caring for your child by providing them with shoes that meet the Uniform Policy and provide protection for the foot required under Workplace Health and Safety guidelines.



## UNIFORM REQUIREMENTS

BOARD POLICY ON THE WEARING OF UNIFORM – The school uniform is compulsory and to be strictly adhered to. Questions or comments about the school uniform should be addressed in writing to the Principal.

### JUNIOR SCHOOL (Years K-6)

GIRLS	BOYS
<u>Summer</u>	<u>Summer</u>
Dress Navy woollen jumper with emblem <i>or</i> Navy cotton mix jumper with emblem Ankle length white socks <u>Black leather school shoes (lace-up or buckle)</u> Surf hat or baseball cap with emblem	Mid-blue short sleeved shirt with emblem Mid-grey shorts Navy woollen jumper with emblem <i>or</i> navy cotton mix jumper with emblem Ankle length grey socks <u>Black leather school shoes (lace-up)</u> Surf hat or baseball cap with emblem
<u>Winter</u>	<u>Winter</u>
Pinafore Long sleeved mid-blue blouse Navy stockings <i>or</i> navy ankle length socks Navy woollen jumper with emblem <i>or</i> Navy cotton mix jumper with emblem <i>and/or</i> Navy jacket with emblem <u>Black leather school shoes (lace-up or buckle)</u> Tie for blouse Navy scarf ( <i>optional</i> ) Navy gloves ( <i>optional</i> )	Mid-blue short sleeved shirt with emblem Mid-grey trousers <i>or</i> shorts Navy woollen jumper with emblem <i>or</i> Navy cotton mix jumper with emblem <i>and/or</i> Navy jacket with emblem Ankle length grey socks Black belt, if required <u>Black leather school shoes (lace-up)</u> Navy scarf ( <i>optional</i> ) Navy gloves ( <i>optional</i> )
<u>Sports Uniform</u>	<u>Sports Uniform</u>
Navy unisex shorts with emblem Polo sports top with emblem School tracksuit ( <i>optional</i> ) Ankle length white socks <u>Non-marking sneakers (navy blue, black or white uppers)</u> Surf hat with emblem	Navy unisex shorts with emblem Polo sports top with emblem School tracksuit ( <i>optional</i> ) Ankle length white socks <u>Non-marking sneakers (navy blue, black or white uppers)</u> Surf hat with emblem

### SECONDARY SCHOOL – MIDDLE SECTION (Years 7-9)

GIRLS	BOYS
<u>Summer</u>	<u>Summer</u>
Skirt Mid-blue short sleeved blouse with emblem Navy woollen jumper with emblem <i>or</i> navy cotton mix jumper with emblem <i>and/or</i> navy jacket with emblem Ankle length white socks <u>Black leather school shoes (lace-up only)</u> Baseball cap with emblem or surf hat with emblem	Mid-blue short sleeved shirt with emblem Mid-grey shorts <i>or</i> trousers – worn with black belt Navy woollen jumper with emblem <i>or</i> navy cotton mix jumper with emblem <i>and/or</i> navy jacket with emblem Black belt Ankle length grey socks <u>Black leather school shoes (lace-up)</u> Baseball cap with emblem or surf hat with emblem
<u>Winter</u>	<u>Winter</u>
<i>As for the Summer Uniform, except for:</i> Navy or black stockings <i>or</i> ankle length navy socks Navy scarf, red or cream ( <i>optional</i> ) Navy gloves ( <i>optional</i> )	<i>As for the Summer Uniform, except for:</i> Navy , red or cream scarf ( <i>optional</i> ) Navy gloves ( <i>optional</i> )
<u>Sports Uniform</u>	<u>Sports Uniform</u>
Navy unisex shorts with emblem Polo sports top with emblem Ankle length white socks <u>Non-marking sneakers (navy blue, black or white uppers)</u> School tracksuit ( <i>optional</i> ) Baseball cap with emblem or surf hat with emblem	Navy unisex shorts with emblem Polo sports top with emblem Ankle length white socks <u>Non-marking sneakers (navy blue, black or white uppers)</u> School tracksuit ( <i>optional</i> ) Baseball cap with emblem or surf hat with emblem

## UNIFORM REQUIREMENTS

### SECONDARY SCHOOL - SENIOR SECTION (Years 10-12)

GIRLS	BOYS
<p style="text-align: center;"><u>Summer</u></p> <p>Skirt White short sleeved blouse with emblem Navy woollen jumper with emblem <i>or</i> navy cotton mix jumper with emblem Ankle length white socks <u>Black leather school shoes (lace-up only)</u> Baseball cap with emblem <i>or</i> surf hat with emblem</p>	<p style="text-align: center;"><u>Summer</u></p> <p>White short sleeved shirt with emblem Mid-grey shorts or trousers – worn with black belt Navy woollen jumper with emblem <i>and/or</i> navy cotton mix jumper with emblem Black belt Ankle length grey socks <u>Black leather school shoes (lace-up)</u> Baseball cap with emblem <i>or</i> surf hat with emblem</p>
<p style="text-align: center;"><u>Winter</u></p> <p><i>As for the Summer Uniform, except for:</i> Navy blazer with emblem (<i>to be ordered through Uniform Shop in Term 1</i>) Navy <i>or</i> black stockings <i>or</i> ankle length navy socks Navy , red <i>or</i> cream scarf (<i>optional</i>) Navy gloves (<i>optional</i>)</p>	<p style="text-align: center;"><u>Winter</u></p> <p><i>As for the Summer Uniform, except for:</i> Navy blazer with emblem (<i>to be ordered through Uniform Shop in Term 1</i>) School tie Navy , red <i>or</i> cream scarf (<i>optional</i>) Navy gloves (<i>optional</i>)</p>
<p style="text-align: center;"><u>Sports Uniform</u></p> <p>Navy unisex shorts with emblem Polo sports top with emblem Ankle length white socks <u>Non-marking sneakers (navy blue, black <i>or</i> white uppers)</u> School tracksuit (<i>optional</i>) Baseball cap with emblem <i>or</i> surf hat with emblem</p>	<p style="text-align: center;"><u>Sports Uniform</u></p> <p>Navy unisex shorts with emblem Polo sports top with emblem Ankle length white socks <u>Non-marking sneakers (navy blue, black <i>or</i> white uppers)</u> School tracksuit (<i>optional</i>) Baseball cap with emblem <i>or</i> surf hat with emblem</p>

### ALL STUDENTS

- School uniform is compulsory and it is expected that the uniform be worn correctly and tidily.
- **All items except school shoes and sneakers must be purchased from the *Uniform Shop*.**
- Shoes should be standard black leather school shoes, low-cut below the ankle. No sneaker look-alikes, suede or desert boots.
  - **Boys** - with laces only.
  - **Girls** - with heels no higher than 3cm. **K-6** laces or buckles. **7-12** laces only.
- Socks must be short and the ankle must be covered. Knee length socks cannot be worn.
- Boys' shorts and trousers should not be baggy and should be worn on the waist.
- Shorts should not extend over the knees.
- Skirts must be no shorter than 8- 12 cm above knees when kneeling.
- Hair
  - Extremes of fashion are not acceptable, including strong streaks, dyes and multiple braids.
  - Boys' hair should not extend over the collar or over the eyes.
  - Junior School girls' hair should be tied back if it is long and should not cover the eyes. Hair should be tied back by a blue, red or white ribbon or scrunchie, or a black, blue, red or white elastic.
  - Secondary girls' hair but must be off the face and hair must be tied back before entering any practical classroom, eg Science, D&T and Food Technology.
- No make-up or coloured nail polish is to be worn.
- Jewellery - Wrist watches may be worn. A single pair of studs in the lobe of the ear is acceptable for girls with pierced ears. Boys may not wear earrings to school. However, Secondary School boys with pierced ears may wear one clear stud. Nose rings or studs are not permitted. Year 11 and 12 students are also permitted a single chain around the neck. This may have a small cross attached.
- Hats – A “no hat, no play” policy applies for the whole year for the Junior School. Hats are compulsory for Secondary students in Terms 1 and 4. We also strongly recommend that all students wear hats during the rest of the year. Hats are compulsory during School Sport where it is safe to wear them.
- Blazers are compulsory for Years 10, 11 and 12 in Terms 2 and 3 and must be worn to and from school. Jumpers may be worn in Terms 1 and 4.
- Shabby or faded clothing will need to be replaced.
- No extra clothing that is visible can be worn, eg T-shirts that show above the neckline of shirts, or designs and logos that show through shirts.
- In keeping with the look of the Senior boys' winter uniform, whenever ties or blazers are worn shirts must be tucked in.
- Shirts and blouses must not be visible below the level of jumpers and blazers.